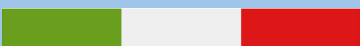


Health, Safety, Quality and Environment

MADE IN ITALY



Iteco Engineering was founded in 1987 in Italy, in Romagna, and is one of the first companies in Italy specialized exclusively in the design and construction of glove boxes and isolators for the safe handling of highly active, chemical, radioactive, microbiological materials and for the processing of products that require an inert atmosphere.

These equipment and systems are intended for chemical pharmaceutical companies, research laboratories, pharmacies and facilities operating in the nanotechnology, new energy and biotechnology sectors.

For over thirty years we have regularly supplied the major national and international groups and bodies operating in these sectors, providing them with standard and customized equipment.

The production is entirely carried out in Italy at our headquarters starting from the design, to the final assembly of the components and S.A.T testing.

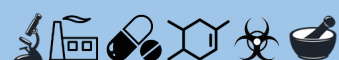
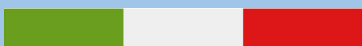
The passion for these projects and the continuous dialogue with our customers who have trusted us and continue to give us over the years has led us to propose the SGS20 Safety line of glove boxes, with the aim of total protection of the person, environment and product.

For this reason we invite you to view this brief presentation of the line and thank you for the attention you will reserve.

Laura Pasini , President

Paola Pasini, General Manager

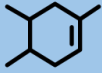
MADE IN ITALY



# SGS20 Safety, from our experience a single line for many applications



Pharmaceutical



Chemical



Biological



Research



Pharmacy



Other Industries



*These systems work in negative pressure*

## *Standard features*

*Monolithic PMMA made structure*

*Hepa H14 input filter*

*Double H14 output filter*

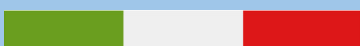
*Acoustic and visual alarm for depressure failure*

## *Optional accessories*

*Automatic inerting system*

*Stainless steel or aluminium made stand*

MADE IN ITALY







## SGS202 Safety model

Two gloves

Working chamber dimensions

900x650x750mm (WxDxH)

Airlock dimensions

350x300x300mm (WxDxH)



## SGS203 Safety model

Three gloves

Working chamber dimensions

1400x650x750mm (WxDxH)

Airlock dimensions

350x300x300mm (WxDxH)



## SGS204 Safety model

Four gloves

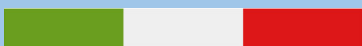
Working chamber dimensions

1800x650x750mm (WxDxH)

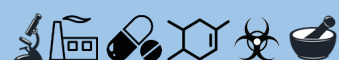
Airlock dimensions

350x300x300mm (WxDxH)

MADE IN ITALY



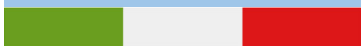
**ITECO**  
ENGINEERING





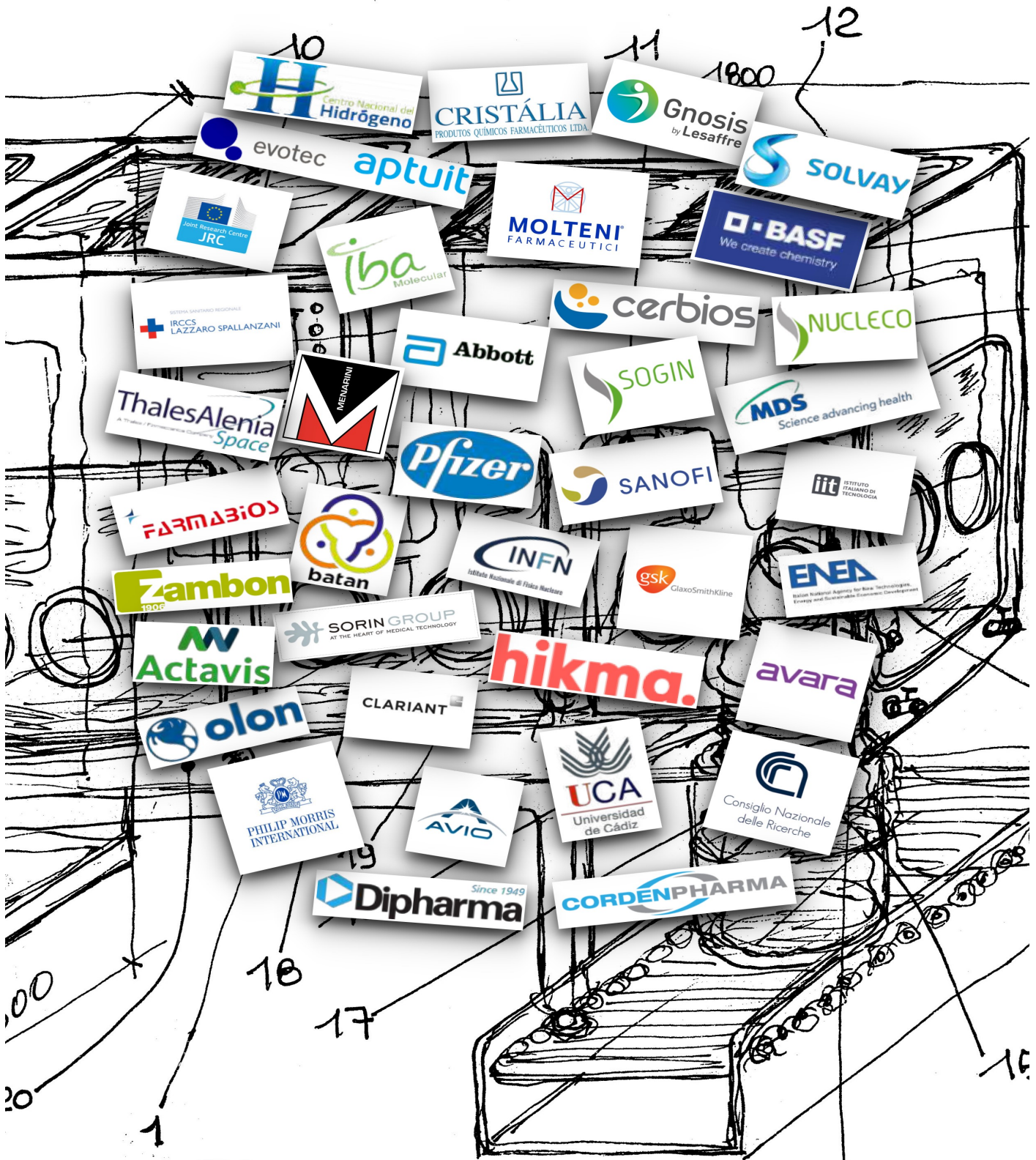
**ITECO**  
ENGINEERING

ITECO S.R.L. Via Emilia Ponente, 1140/A—Castelbolognese (Ra) - ITALY  
 +39 0546 55525 — iteco@itecoeng.com - <https://www.itecoeng.com>



MADE IN ITALY





ITECO S.R.L. Via Emilia Ponente, 1140/A—Castelbolognese (Ra) - ITALY

+39 0546 55525 — iteco@itecoeng.com - <https://www.itecoeng.com>

MADE IN ITALY